

DIMENSION GENERAL NOTES:

1. CEILING TYPE: STRUCTURAL HEADER
2. CEILING TILE TYPE: N/A
3. SOFFIT ALIGNMENT: 1/2" REVEL FROM FRONT FACE OF HEADER
4. FLOORING TYPE: CARPET AND LVT
5. FIELD MEASURE PROVIDED BY INSTALLER.
6. FIELD MEASURES ARE REQUIRED PRIOR TO ORDER. VERTICAL DIMENSIONS MUST BE MEASURED FROM BENCHMARK EVERY 24" ALONG RUN. HORIZONTAL DIMENSIONS MUST BE MEASURED FROM FINISHED DRYWALL TO FINISHED DRYWALL.
7. DIMENSION PRODUCT WILL BE MANUFACTURED TO DIMENSIONS SHOWN
8. PRODUCT DIMENSIONS ARE TO CENTERLINE OF ARCHITECTURAL WALL AND TO FACE OF DRYWALL PARTITION UNLESS OTHERWISE NOTED.
9. ALL DIMENSIONS REPRESENT FINISHED DIMENSIONS, UNLESS OTHERWISE NOTED.
10. HOLD TO WIDTH DIMENSIONS BASED UPON AUTOCAD FILES, FIELD DIMS TO FRAMING, SNAPPED LINES, ETC.
10. DIMENSION INSTALLS ON TOP OF FINISHED FLOOR, AGAINST FINISHED DRYWALL, & BENEATH FINISHED CEILING UNLESS OTHERWISE NOTED.
11. DIMENSION GLASS PANEL SEAMS OTHER THAN INLINE/STRAIGHT, 90 DEGREES 2-WAY / 3-WAY CANNOT BE ACCOMMODATED BY VERTICAL FILLERS, AND WILL NEED TO BE CAULKED IN FIELD.
12. ANGLES OTHER THAN 90 DEGREES WILL REQUIRE FIELD MITERED UNIVERSAL TRIMS.

DIMENSION TOLERANCES:

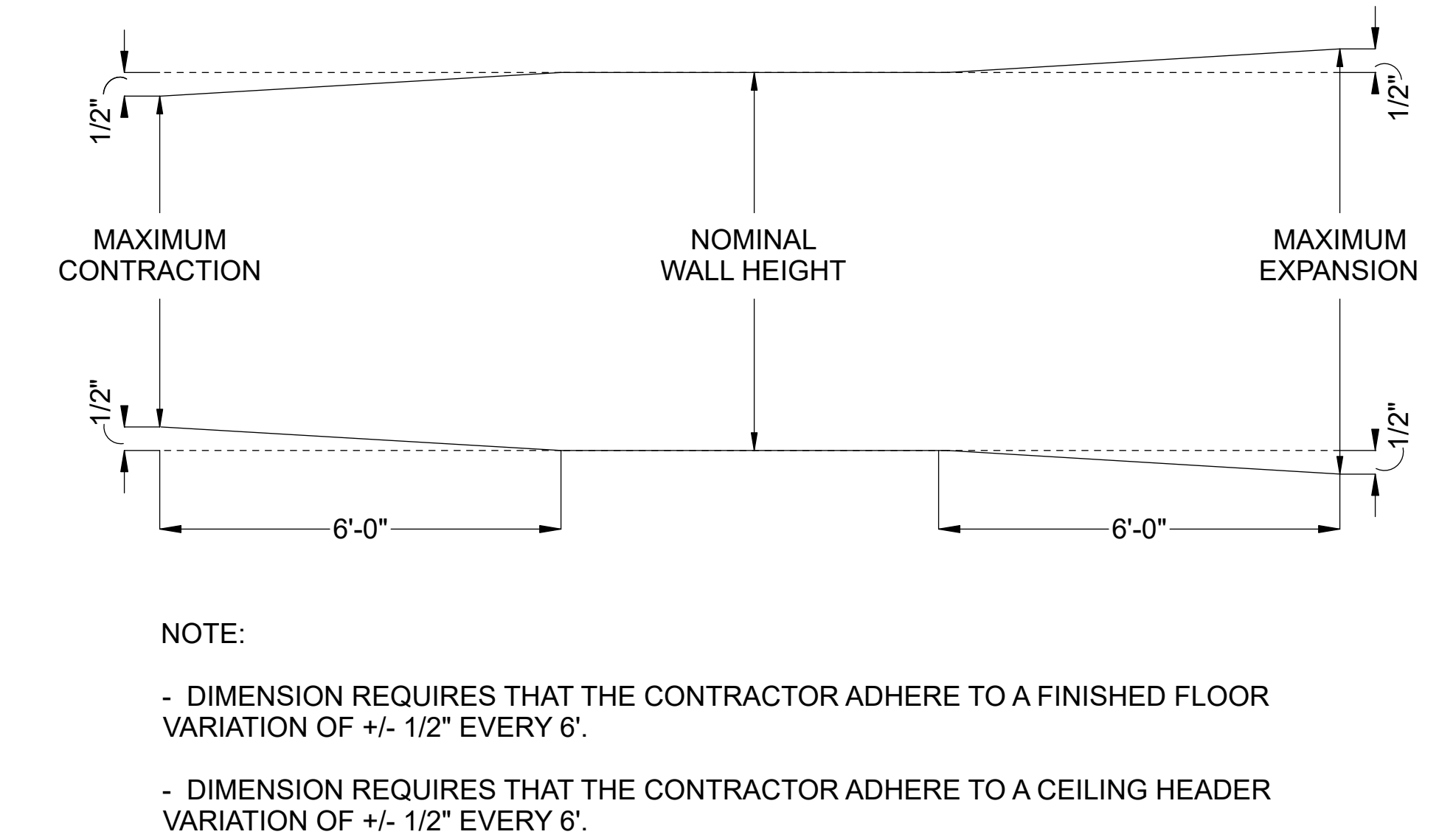
1. DIMENSION PANEL THICKNESS - SINGLE GLAZED 1-3/8"D, DOUBLE GLAZED/DOOR FRAMES 2-11/16"D.
2. DIMENSION REQUIRES THAT THE CONTRACTOR ADHERE TO A FINISHED FLOOR VARIATION OF +/- 1/2" EVERY 6'.
3. DIMENSION REQUIRES THAT THE CONTRACTOR ADHERE TO A CEILING HEADER VARIANCE OF +/- 1/2" EVERY 6'.
4. DIMENSION REQUIRES THE CONTRACTOR ADHERE TO VERTICAL PLUMBNESS OF +/- 1/2" OVER 10'.
5. SLIDING DOOR REQUIRES 37" MINIMUM FROM DRYWALL TO DOOR FRAME FOR TRACK TO MOUNT.
4. NOMINAL HEIGHT SHOWN ON DRAWING TO BE HELD WITHIN +/- 1/2" FOR ALL DOOR TYPES.
5. ALL PLANES WE ARE ATTACHING TO (BOTH VERTICAL AND HORIZONTAL) SHOULD BE PLUMB AND TRUE AS POSSIBLE.

BUILDING CONDITIONS:

1. DIMENSION TO MOUNT FLUSH TO THE INTERIOR OF THE BUILDING SILL CONDITION. TRANSITION BETWEEN THIS CONDITION AND WINDOW OR WINDOW MULLION BY OTHERS.
2. BUILDOUT REQUIRED WHEN THE BUILDING CONDITION IS NOT AT A 90 DEGREE ANGLE TO THE DIMENSION WALL.
3. SWING DOOR MAY BE REQUIRED TO MEET BUILDING CODE IN ROOMS LARGER THAN 750 SQFT OR AN OCCUPANCY GREATER THAN 10 PEOPLE.
4. DRYWALL ADJACENT TO A SLIDING DOOR APPLICATION WITH LESS THAN A 37"W PANEL REQUIRES BLOCKING IN THE DRYWALL TO SUPPORT THE WEIGHT OF THE DOOR IN OPEN POSITION.
5. SLIDING DOUBLE DOORS REQUIRE BLOCKING ABOVE THE HEADER TO SUPPORT THE WEIGHT OF THE DOOR IN CLOSED POSITION.

WINDOW FILM:

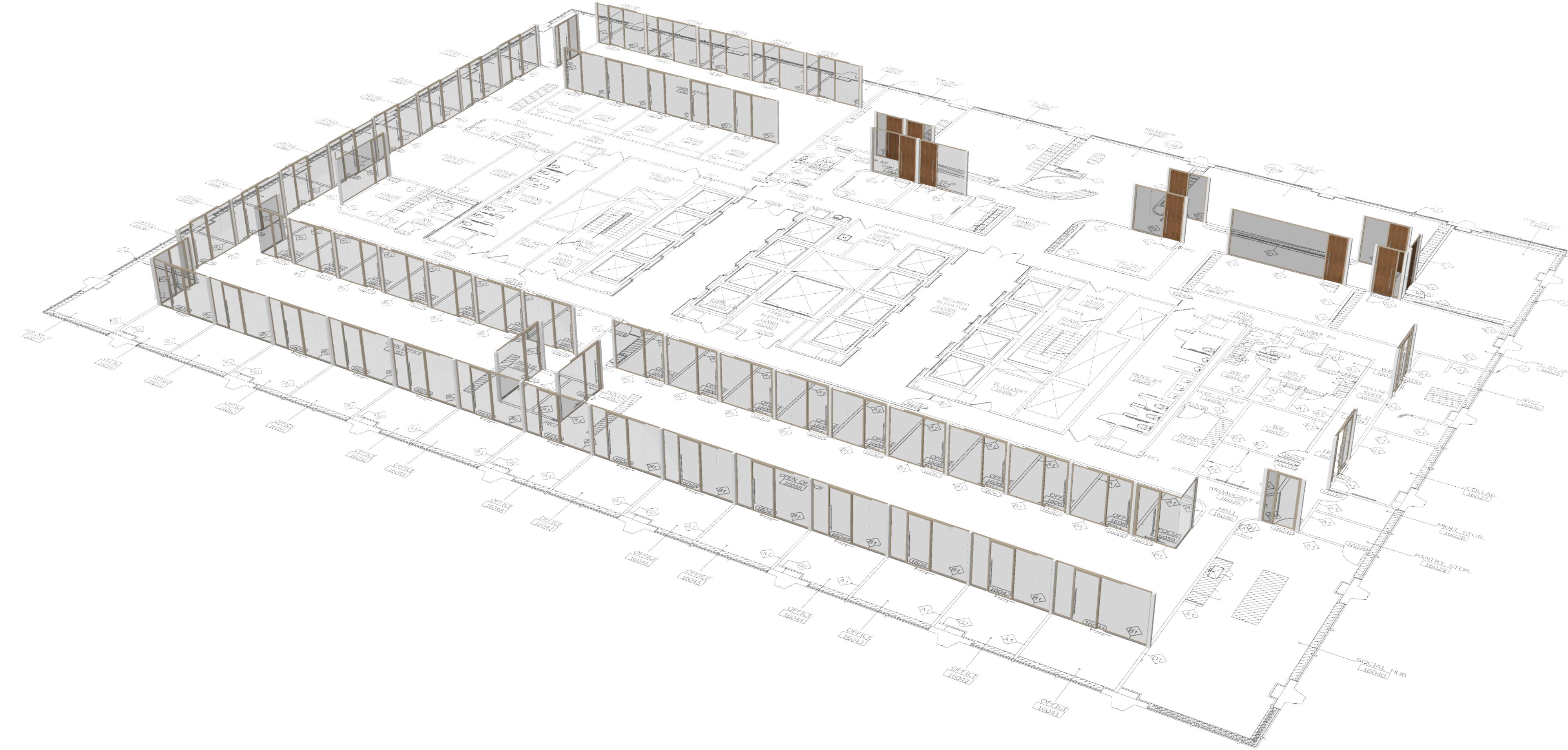
1. WINDOW FILM TO BE INSTALLED ON THE INTERIOR SIDE OF ROOM FOR DEMOUNTABLE GLASS WALLS. WINDOW FILM TO BE SUPPLIED AND INSTALLED BY OTHERS.



2

FLOOR AND CEILING VARIATION

SCALE: N.T.S.

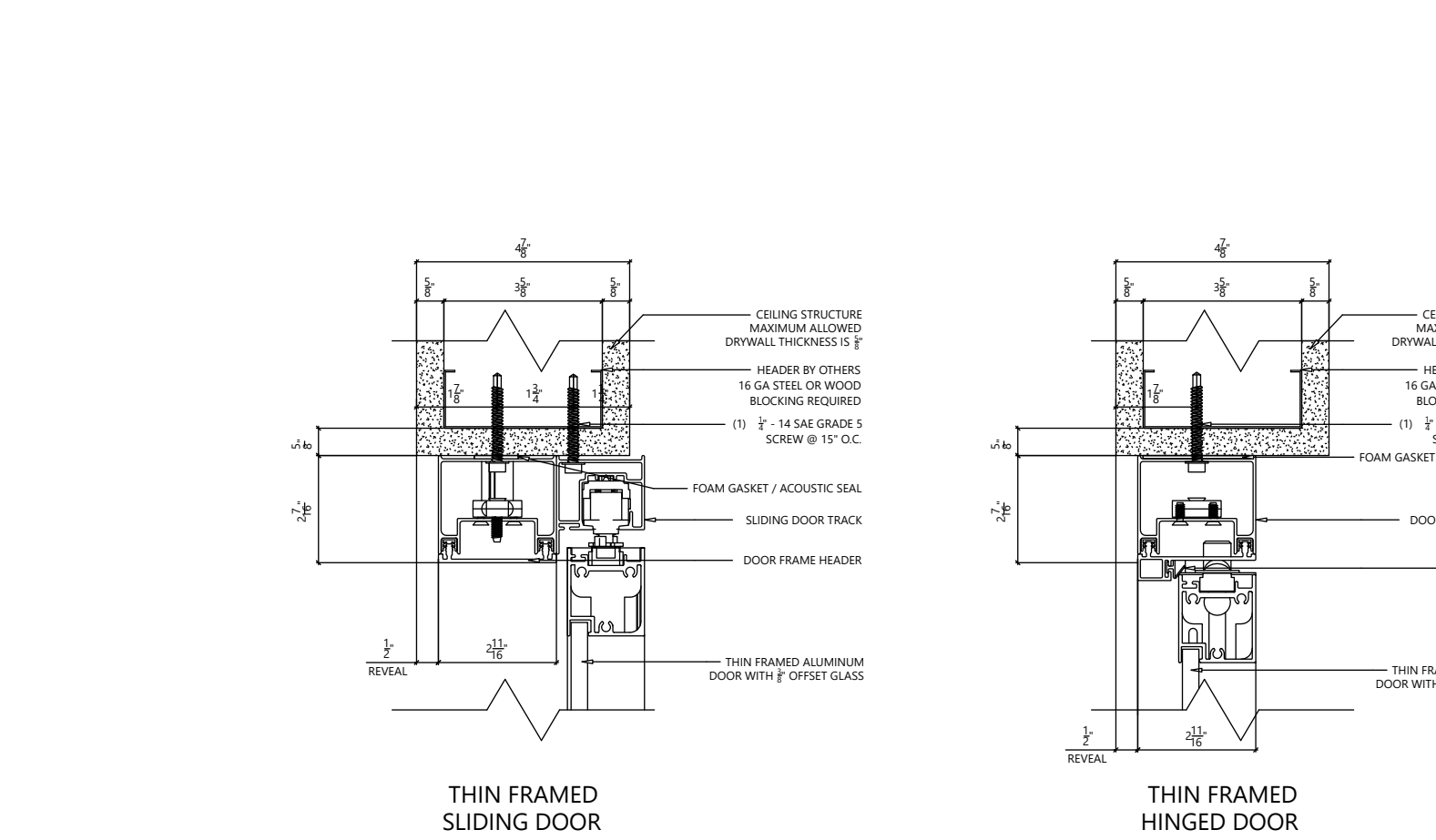


1

3-D VIEW

100

SCALE: N.T.S.



3

RECOMMENDED HEADER DETAIL

100

SCALE: 3" = 1'-0"

SHEET LIST	
100	COVER SHEET
101	SITE PLAN
201	SCHEDULES - PANELS
202	SCHEDULES - DOORS
301	CUT SHEETS

**LEGAL NOTE:**

THIS DRAWING IS CONFIDENTIAL AND PROPRIETARY INFORMATION OF THE ENTITY IDENTIFIED HEREON AND/OR HNI TECHNOLOGIES, INC. IT IS SUBMITTED SUBJECT TO RETURN UPON REQUEST AND UPON THE EXPRESS CONDITION THAT THE INFORMATION CONTAINED HEREIN WILL BE HELD IN CONFIDENCE AND WILL BE USED SOLELY FOR THE BENEFIT OF THE OWNERS. BY COMPANY'S WRITTEN APPROVAL OF THIS DRAWING, COMPANY EXPRESSLY ACCEPTS THESE TERMS AND CONDITIONS IN ADDITION TO THE TERMS AND CONDITIONS OF SALE ATTACHED TO THE QUOTE FOR THIS PRODUCT. INCLUDING, BUT NOT LIMITED TO, THE PROVISIONS RELATED TO CRITICAL (HOLD TO) DIMENSIONS.

**Golub Capital**

Floor 16

225 W. Randolph  
Chicago, IL 60606

**DEMOUNTABLE TOLERANCE NOTE:**

ALL VERTICAL AND HORIZONTAL PLANES DEMOUNTABLE WALLS ARE ATTACHING TO SHOULD BE AS PLUMB AND TRUE AS POSSIBLE. DEMOUNTABLE WALLS PRODUCT HEIGHT ADJUSTMENTS INCLUDE:

+/- .3/4" FOR BEYOND FRAMELESS, FRAMED, SOLID  
+/- .1/4" FOR BEYOND FRAMELESS LOW PROFILE  
+/-1/4" FOR ASPECT

**DIMENSION NOTE:**

DIMENSIONS ARE TO CENTERLINE OF DEMOUNTABLE WALL AND TO FACE OF DRYWALL PARTITION UNLESS OTHERWISE NOTED.

**HOLD-TO DIMENSION APPROVAL:**

THE SCOPE OF PRODUCT SHOWN ON THESE DRAWINGS WILL BE MANUFACTURED TO THE HOLD-TO DIMENSIONS NOTED.

HENRICKSEN EXPRESSLY DISCLAIMS ANY AND ALL LIABILITY FOR ANY COST OR DELAYS CAUSED BY DEVIATION FROM THE HOLD-TO DIMENSIONS NOTED.

☐ APPROVED

☐ APPROVED AS NOTED (NO RESUBMISSION REQUIRED)

☐ REVISE AND RESUBMIT

BY:

COMPANY:

DATE:

REVISION HISTORY:		
REV	REVISION DESCRIPTION	DATE
1	revised backgrounds	02-24-2026
2		
3		
4		
5		
6		
7		
8		
9		
10		

Henricksen Project Number **25101812**

Issue Date **11-06-2025**

Designer **C. PAPE**

Project Manager **TBD**

Scale **N.T.S.**

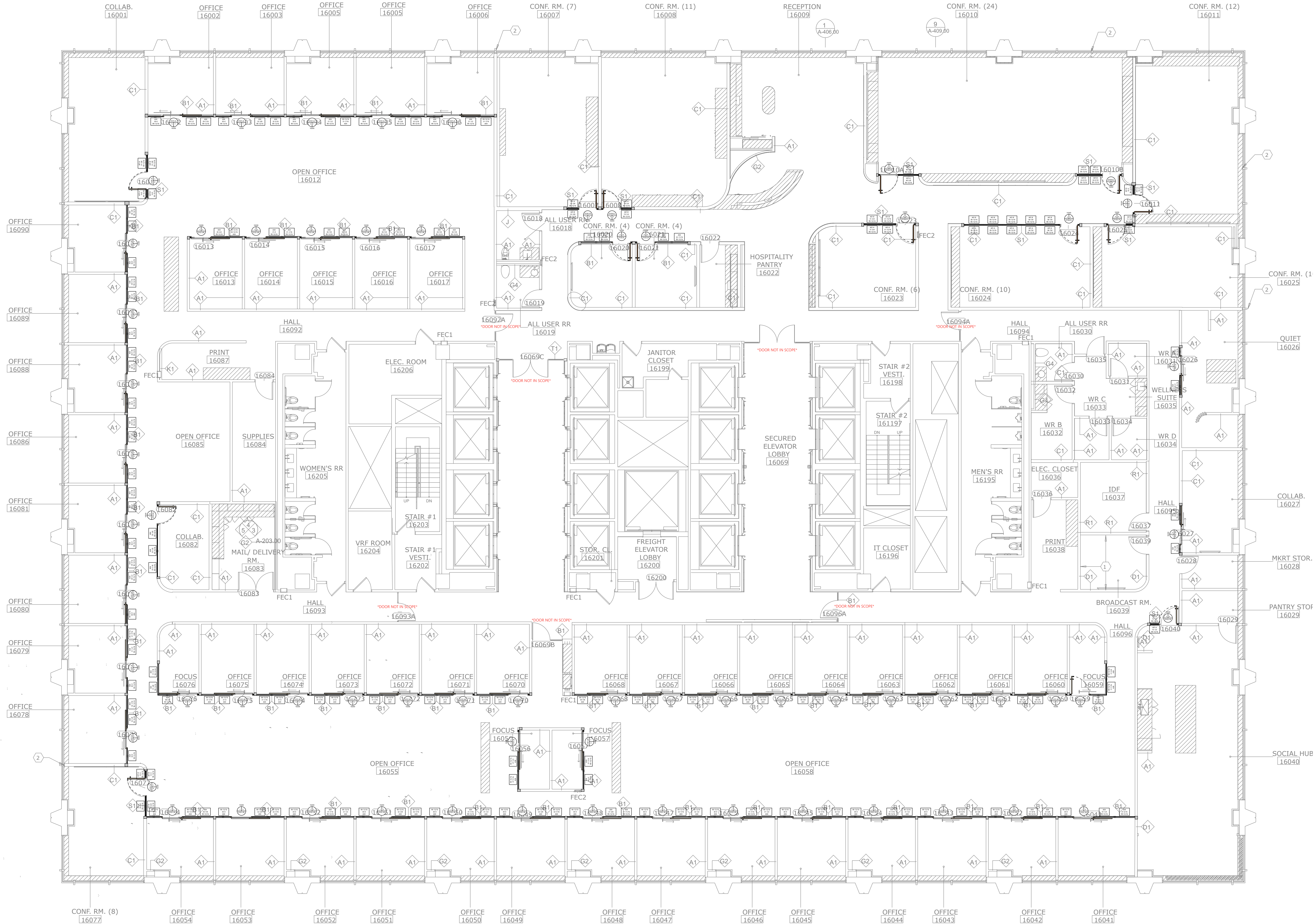


DIMENSION PROJECT SCOPE

TOTAL LINEAR FEET = 665'  
SINGLE GLAZED = 372'-7"  
DOUBLE GLAZED = 44'  
DOORS = 248'-4"

TOTAL DOORS = 67  
HINGED DOORS = 15  
PIVOT DOORS = N/A  
SLIDING DOORS = 52

ETO'S - NO



**LEGAL NOTE:**  
THIS DRAWING IS CONFIDENTIAL AND PROPRIETARY INFORMATION OF THE ENTITY IDENTIFIED HEREON AND/OR HNI TECHNOLOGIES, INC. IT IS SUBMITTED SUBJECT TO RETURN UPON REQUEST AND UPON THE EXPRESS CONDITION THAT THE INFORMATION CONTAINED HEREIN WILL BE HELD IN CONFIDENCE AND WILL BE USED SOLELY FOR THE BENEFIT OF THE OWNERS. BY COMPANY'S WRITTEN APPROVAL OF THIS DRAWING, COMPANY EXPRESSLY ACCEPTS THESE TERMS AND CONDITIONS IN ADDITION TO THE TERMS AND CONDITIONS OF SALE ATTACHED TO THE QUOTE FOR THIS PRODUCT, INCLUDING, BUT NOT LIMITED TO, THE PROVISIONS RELATED TO CRITICAL (HOLD TO) DIMENSIONS.

Golub Capital

Floor 16

225 W. Randolph  
Chicago, IL 60606

DEMOUNTABLE TOLERANCE NOTE:

ALL VERTICAL AND HORIZONTAL PLANES  
DEMOUNTABLE WALLS ARE ATTACHING TO SHOULD BE AS PLUMB AND TRUE AS POSSIBLE.  
DEMOUNTABLE WALLS PRODUCT HEIGHT  
ADJUSTMENTS INCLUDE:  
+/- .34" FOR BEYOND FRAMELESS, FRAMED, SOLID  
+/- .14" FOR BEYOND FRAMELESS LOW PROFILE  
+/- .14" FOR ASPECT

DIMENSION NOTE:

DIMENSIONS ARE TO CENTERLINE OF DEMOUNTABLE WALL AND TO FACE OF DRYWALL PARTITION UNLESS OTHERWISE NOTED.

HOLD-TO DIMENSION APPROVAL:

THE SCOPE OF PRODUCT SHOWN ON THESE DRAWINGS WILL BE MANUFACTURED TO THE HOLD-TO DIMENSIONS NOTED.  
HENRICKSEN EXPRESSLY DISCLAIMS ANY AND ALL LIABILITY FOR ANY COST OR DELAYS CAUSED BY DEVIATION FROM THE HOLD-TO DIMENSIONS NOTED.

- ☐ APPROVED
- ☐ APPROVED AS NOTED (NO RESUBMISSION REQUIRED)
- ☐ REVISE AND RESUBMIT

BY:  
COMPANY:  
DATE:

REVISION HISTORY:

REV	REVISION DESCRIPTION	DATE
1	revised backgrounds	02-24-2026
2		
3		
4		
5		
6		
7		
8		
9		
10		

Henricksen Project Number 25101812  
Issue Date 11-06-2025  
Designer C. PAPE  
Project Manager TBD  
Scale 1/8" = 1'-0"

SITE PLAN

**LEGAL NOTE:**

THIS DRAWING IS CONFIDENTIAL AND PROPRIETARY INFORMATION OF THE ENTITY IDENTIFIED HEREON AND/OR HNI TECHNOLOGIES, INC. IT IS SUBMITTED SUBJECT TO RETURN UPON REQUEST AND UPON THE EXPRESS CONDITION THAT THE INFORMATION CONTAINED HEREIN WILL BE HELD IN CONFIDENCE AND WILL BE USED SOLELY FOR THE BENEFIT OF THE OWNERS. BY COMPANY'S WRITTEN APPROVAL OF THIS DRAWING, COMPANY EXPRESSLY ACCEPTS THESE TERMS AND CONDITIONS IN ADDITION TO THE TERMS AND CONDITIONS OF SALE ATTACHED TO THE QUOTE FOR THIS PRODUCT, INCLUDING, BUT NOT LIMITED TO, THE PROVISIONS RELATED TO CRITICAL (HOLD TO) DIMENSIONS.

Golub Capital

Floor 16

225 W. Randolph

Chicago, IL 60606

DEMOUNTABLE TOLERANCE NOTE:

ALL VERTICAL AND HORIZONTAL PLANES  
DEMOUNTABLE WALLS ARE ATTACHING TO SHOULD BE AS PLUMB AND TRUE AS POSSIBLE.  
DEMOUNTABLE WALLS PRODUCT HEIGHT  
ADJUSTMENTS INCLUDE:  
+/- .3/4" FOR BEYOND FRAMELESS, FRAMED, SOLID  
+/- .1/4" FOR BEYOND FRAMELESS LOW PROFILE  
+/-1/4" FOR ASPECT

DIMENSION NOTE:

DIMENSIONS ARE TO CENTERLINE OF DEMOUNTABLE WALL AND TO FACE OF DRYWALL PARTITION UNLESS OTHERWISE NOTED.

HOLD-TO DIMENSION APPROVAL:

THE SCOPE OF PRODUCT SHOWN ON THESE DRAWINGS WILL BE MANUFACTURED TO THE HOLD-TO DIMENSIONS NOTED.

HENRICKSEN EXPRESSLY DISCLAIMS ANY AND ALL LIABILITY FOR ANY COST OR DELAYS CAUSED BY DEVIATION FROM THE HOLD-TO DIMENSIONS NOTED.

- ☐ APPROVED
- ☐ APPROVED AS NOTED  
(NO RESUBMISSION REQUIRED)
- ☐ REVISE AND RESUBMIT

BY:  
COMPANY:  
DATE:

REVISION HISTORY:

REV	REVISION DESCRIPTION	DATE
1	revised backgrounds	02-24-2026
2		
3		
4		
5		
6		
7		
8		
9		
10		

Henricksen Project Number 25101812  
Issue Date 11-06-2025  
Designer C. PAPE  
Project Manager TBD  
Scale 3/8" = 1'-0"

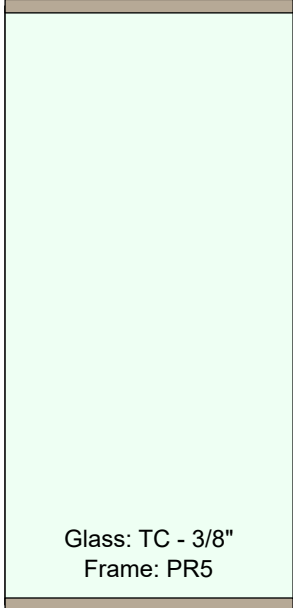
SCHEDULES

201

Dimension Panels

A01.A

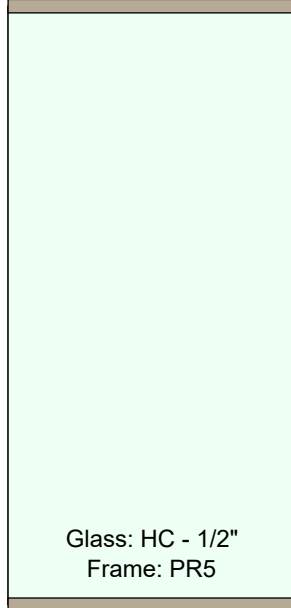
Dimension Double ½" ¾"



- A01.A  
WIDTH  
99-13/16

11-1/8 - QTY 1 (69294)  
12-0 - QTY 1 (73934)  
14-0 - QTY 1 (74406)  
15-1/2 - QTY 1 (68832)  
16-0 - QTY 1 (74402)  
19-1/4 - QTY 1 (71272)  
22-3/8 - QTY 1 (74409)  
24-5/16 - QTY 2 (74403)  
31-5/8 - QTY 1 (69126)  
31-3/4 - QTY 1 (69155)  
31-13/16 - QTY 1 (69129)  
38-13/16 - QTY 3 (70340)  
38-7/8 - QTY 2 (68665)  
39-3/8 - QTY 1 (68757)  
40-3/8 - QTY 1 (74407)

A01.B

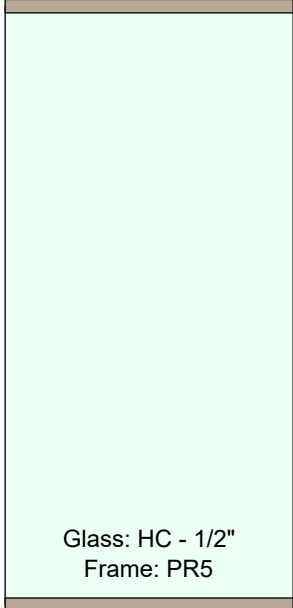


- A01.B  
WIDTH  
99-13/16

11-1/8 - QTY 1 (69304)  
12-0 - QTY 1 (74398)  
14-0 - QTY 1 (74405)  
15-1/2 - QTY 1 (68836)  
16-0 - QTY 1 (74404)  
19-1/4 - QTY 1 (71268)  
22-3/8 - QTY 1 (74399)  
24-5/16 - QTY 2 (74401)  
31-5/8 - QTY 1 (69985)  
31-3/4 - QTY 1 (69967)  
31-13/16 - QTY 1 (70074)  
38-13/16 - QTY 3 (70581)  
38-7/8 - QTY 2 (72655)  
39-3/8 - QTY 1 (68756)  
40-3/8 - QTY 1 (70043)

A04

Dimension Single ½"



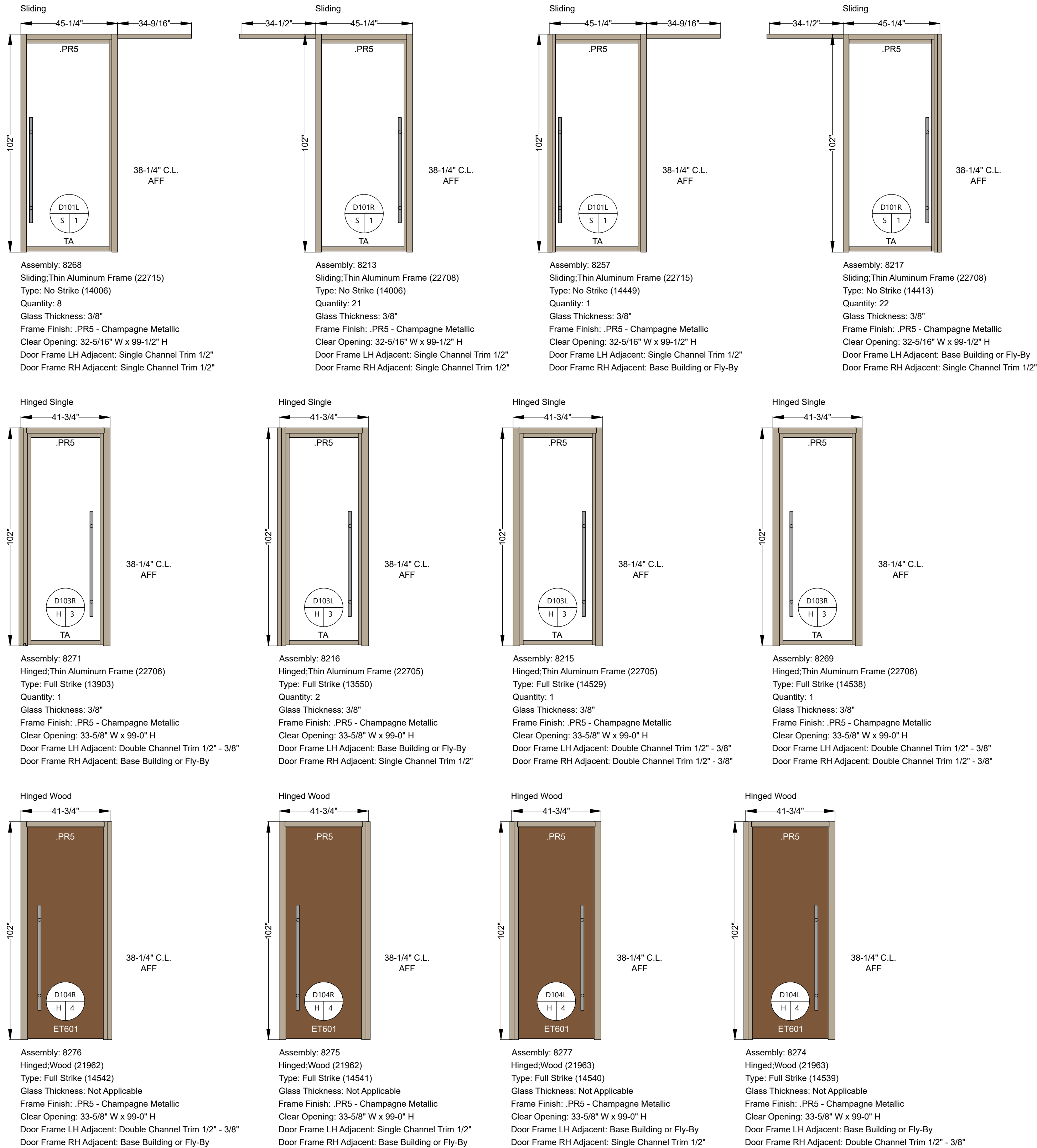
- A04  
WIDTH  
99-13/16

15-3/8 - QTY 2 (68785)  
28-1/8 - QTY 1 (69199)  
28-3/16 - QTY 1 (69203)  
28-7/16 - QTY 2 (66100)  
28-1/2 - QTY 2 (74387)  
29-7/16 - QTY 4 (73933)  
29-1/2 - QTY 4 (69552)  
30-0 - QTY 21 (73105)  
30-5/8 - QTY 1 (69467)  
30-11/16 - QTY 1 (71207)  
30-3/4 - QTY 1 (72653)  
30-13/16 - QTY 2 (72655)  
30-7/8 - QTY 17 (72673)  
31-0 - QTY 10 (74328)  
31-1/16 - QTY 10 (74323)  
31-3/16 - QTY 1 (74387)  
31-1/4 - QTY 1 (74408)  
31-3/8 - QTY 2 (69512)  
31-7/16 - QTY 9 (68774)  
31-1/2 - QTY 7 (68794)  
31-9/16 - QTY 1 (73104)  
31-5/8 - QTY 2 (69126)  
31-11/16 - QTY 1 (69157)  
32-1/16 - QTY 1 (71202)  
32-1/8 - QTY 1 (69505)  
32-5/16 - QTY 3 (66119)  
32-3/8 - QTY 6 (69164)  
32-7/16 - QTY 5 (74322)  
32-1/2 - QTY 2 (66133)  
32-5/8 - QTY 1 (66115)  
32-11/16 - QTY 1 (69131)  
33-3/4 - QTY 1 (68666)  
35-1/16 - QTY 1 (70502)  
35-1/8 - QTY 2 (69515)  
36-0 - QTY 8 (68658)  
37-7/16 - QTY 2 (66737)  
37-1/2 - QTY 2 (69135)  
38-3/4 - QTY 1 (69143)  
41-1/4 - QTY 1 (69495)  
41-5/16 - QTY 1 (69549)

AP Glass Finish Schedule				
Category	Finish Code	Thumbnail Image	Description	Notes
Exterior Glass	HC		Glass Grade 2 Option   1/2"LaminatedClear	
Exterior Glass	TC		TC	
Interior Glass	HC		Glass Grade 2 Option   1/2"LaminatedClear	
Trim	PR5		Champagne Metallic	



Dimension Doors



Dimension Door Hardware Schedule

HARDWARE SET #1

SET QUANTITY	52
HANDLE	(1) 49" Ladder; 1-1/2" dia., Silver (SIL) (5053)
LOCK STYLE	N/A
MECHANICAL LOCK STYLE	N/A
ELECTRONIC LOCK STYLE	N/A
MOUNTING	Slow Close/Slow Open, Same as Frame Finish (13176)
DOOR STOP	N/A
MISC	N/A
NOTES	

HARDWARE SET #3

SET QUANTITY	5
HANDLE	(1) 49" Ladder; 1-1/2" dia., Silver (SIL) (5006)
LOCK STYLE	N/A
MECHANICAL LOCK STYLE	N/A
ELECTRONIC LOCK STYLE	N/A
MOUNTING	(1) 4"x4" Self-Closing Hinges, Left Hand Silver (SIL) (5023)
DOOR STOP	(1) Dome SIL (5005)
MISC	Roller Latch (5008)
NOTES	

HARDWARE SET #4

SET QUANTITY	10
HANDLE	(1) 49" Ladder; 1-1/2" dia., Silver (SIL) (5022)
LOCK STYLE	N/A
MECHANICAL LOCK STYLE	N/A
ELECTRONIC LOCK STYLE	N/A
MOUNTING	(1) 4"x4" Self-Closing Hinges, Left Hand Silver (SIL) (5088)
DOOR STOP	(1) Dome SIL (5005)
MISC	Roller Latch (5025)
NOTES	

AP Door Finish Schedule				
Category	Finish Code	Thumbnail Image	Description	Notes
Dimension Hinged Solid Door Frame	PR5		Champagne Metallic	
Dimension Hinged Solid Door Hardware	SIL		Silver	
Dimension Hinged Solid Door Stop	SIL		Silver	
Dimension Hinged Solid Door Wood	ET601		Grd 1 Veneer Opts   Stratawood Flat Cut Walnut   Light Walnut (Use OP Top Fin)	
Dimension Hinged Thin Framed Door Frame	PR5		Champagne Metallic	
Dimension Hinged Thin Framed Door Glass	TA		Glass Grade 1 Option   3/8"TemperedClear	
Dimension Hinged Thin Framed Door Hardware	SIL		Silver	
Dimension Hinged Thin Framed Door Stop	SIL		Silver	
Dimension Sliding Thin Framed Door Frame	PR5		Champagne Metallic	
Dimension Sliding Thin Framed Door Glass	TA		Glass Grade 1 Option   3/8"TemperedClear	
Dimension Sliding Thin Framed Door Hardware	SIL		Silver	
Dimension Sliding Thin Framed Door Stop	SIL		Silver	

LEGAL NOTE:

THIS DRAWING IS CONFIDENTIAL AND PROPRIETARY INFORMATION OF THE ENTITY IDENTIFIED HEREON AND/OR HNI TECHNOLOGIES, INC. IT IS SUBMITTED SUBJECT TO RETURN UPON REQUEST AND UPON THE EXPRESS CONDITION THAT THE INFORMATION CONTAINED HEREIN WILL BE HELD IN CONFIDENCE AND WILL BE USED SOLELY FOR THE BENEFIT OF THE OWNERS. BY COMPANY'S WRITTEN APPROVAL OF THIS DRAWING, COMPANY EXPRESSLY ACCEPTS THESE TERMS AND CONDITIONS IN ADDITION TO THE TERMS AND CONDITIONS OF SALE ATTACHED TO THE QUOTE FOR THIS PRODUCT, INCLUDING, BUT NOT LIMITED TO, THE PROVISIONS RELATED TO CRITICAL (HOLD TO) DIMENSIONS.

Golub Capital

Floor 16

225 W. Randolph

Chicago, IL 60606

DEMOUNTABLE TOLERANCE NOTE:

ALL VERTICAL AND HORIZONTAL PLANES DEMOUNTABLE WALLS ARE ATTACHING TO SHOULD BE AS PLUMB AND TRUE AS POSSIBLE. DEMOUNTABLE WALLS PRODUCT HEIGHT ADJUSTMENTS INCLUDE: +/- .3/4" FOR BEYOND FRAMELESS, FRAMED, SOLID +/- .1/4" FOR BEYOND FRAMELESS LOW PROFILE +/- .1/4" FOR ASPECT

DIMENSION NOTE:

DIMENSIONS ARE TO CENTERLINE OF DEMOUNTABLE WALL AND TO FACE OF DRYWALL PARTITION UNLESS OTHERWISE NOTED.

HOLD-TO DIMENSION APPROVAL:

THE SCOPE OF PRODUCT SHOWN ON THESE DRAWINGS WILL BE MANUFACTURED TO THE HOLD-TO DIMENSIONS NOTED.

HENRICKSEN EXPRESSLY DISCLAIMS ANY AND ALL LIABILITY FOR ANY COST OR DELAYS CAUSED BY DEVIATION FROM THE HOLD-TO DIMENSIONS NOTED.

- ☐ APPROVED  
☐ APPROVED AS NOTED (NO RESUBMISSION REQUIRED)  
☐ REVISE AND RESUBMIT

BY:  
COMPANY:  
DATE:

REVISION HISTORY:

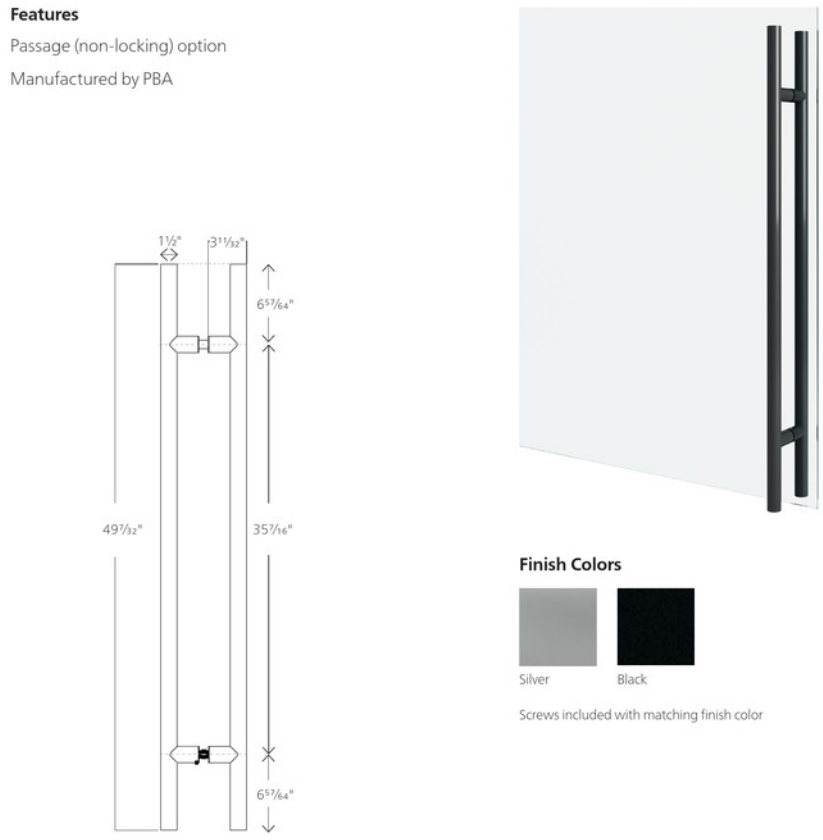
REV	REVISION DESCRIPTION	DATE
1	revised backgrounds	02-24-2026
2		
3		
4		
5		
6		
7		
8		
9		
10		

Henricksen Project Number **25101812**  
Issue Date **11-06-2025**  
Designer **C. PAPE**  
Project Manager **TBD**  
Scale **3/8" = 1'-0"**

SCHEDULES

49" Ladder Pull

Architectural Products Door Hardware  
For use with Aspect™ and Beyond™ sliding or swing (hinged and pivot) doors with a closure option



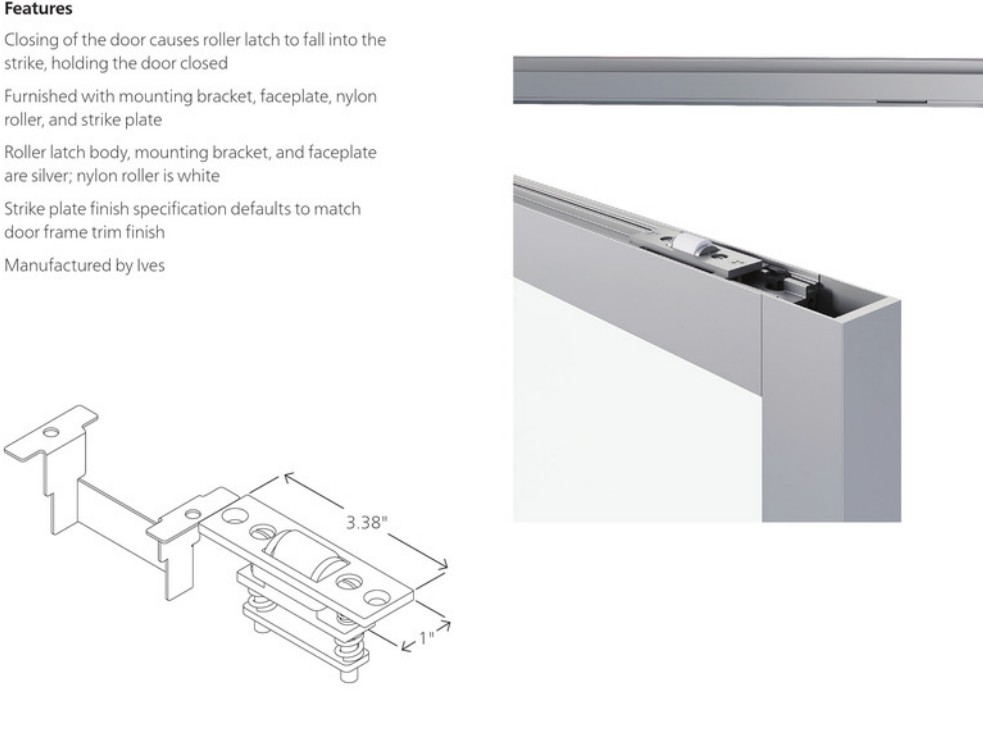
Allsteel®  
Allsteel LLC  
240 N. Michigan  
Chicago, IL 60607  
allsteeloffice.com  
©2024 Allsteel LLC  
Aspect and Beyond are registered trademarks and Aspect is a trademark.  
Goose and Henricks are trademarks.

Although the colors reproduced on this card were matched with care, they may vary from the actual finish. When color is critical, please obtain a physical sample.

5

Roller Latch for Thin Frame Swing Doors

Architectural Products Door Hardware  
For use with Aspect™ and Beyond™ thin frame swing (pivot or hinged) doors when specified with a ladder pull



Allsteel®  
Allsteel LLC  
240 N. Michigan  
Chicago, IL 60607  
allsteeloffice.com  
©2024 Allsteel LLC  
Aspect and Beyond are registered trademarks and Aspect is a trademark.  
Goose and Henricks are trademarks.

Although the colors reproduced on this card were matched with care, they may vary from the actual finish. When color is critical, please obtain a physical sample.

21

Self-Closing Hinges

Architectural Products Door Hardware  
For use with Aspect™ and Beyond™ hinged doors



Allsteel®  
Allsteel LLC  
240 N. Michigan  
Chicago, IL 60607  
allsteeloffice.com  
©2024 Allsteel LLC  
Aspect and Beyond are registered trademarks and Aspect is a trademark.  
Goose and Henricks are trademarks.

Although the colors reproduced on this card were matched with care, they may vary from the actual finish. When color is critical, please obtain a physical sample.

27

Dome Door Stop for Swing Door

Architectural Products Door Hardware  
For use with Aspect™ solid and Beyond™ swing (hinged and pivot) doors



Allsteel®  
Allsteel LLC  
240 N. Michigan  
Chicago, IL 60607  
allsteeloffice.com  
©2024 Allsteel LLC  
Aspect and Beyond are registered trademarks and Aspect is a trademark.  
Goose and Henricks are trademarks.

Although the colors reproduced on this card were matched with care, they may vary from the actual finish. When color is critical, please obtain a physical sample.

43

1 LADDER PULL - NON LOCKING  
301 SCALE: NTS

2 ROLLER LATCH - THIN FRAME  
301 SCALE: NTS

3 SELF-CLOSING HINGES  
301 SCALE: NTS

4 DOME DOOR STOP  
301 SCALE: NTS



Allsteel®

**LEGAL NOTE:**  
THIS DRAWING IS CONFIDENTIAL AND PROPRIETARY INFORMATION OF THE ENTITY IDENTIFIED HEREON AND/OR HNI TECHNOLOGIES, INC. IT IS SUBMITTED SUBJECT TO RETURN UPON REQUEST AND UPON THE EXPRESS CONDITION THAT THE INFORMATION CONTAINED HEREIN WILL BE HELD IN CONFIDENCE AND WILL BE USED SOLELY FOR THE BENEFIT OF THE OWNERS. BY COMPANY'S WRITTEN APPROVAL OF THIS DRAWING, COMPANY EXPRESSLY ACCEPTS THESE TERMS AND CONDITIONS IN ADDITION TO THE TERMS AND CONDITIONS OF SALE ATTACHED TO THE QUOTE FOR THIS PRODUCT, INCLUDING, BUT NOT LIMITED TO, THE PROVISIONS RELATED TO CRITICAL (HOLD TO) DIMENSIONS.

Golub Capital

Floor 16

225 W. Randolph

Chicago, IL 60606

DEMOUNTABLE TOLERANCE NOTE:

ALL VERTICAL AND HORIZONTAL PLANES  
DEMOUNTABLE WALLS ARE ATTACHING TO SHOULD BE AS PLUMB AND TRUE AS POSSIBLE.  
DEMOUNTABLE WALLS PRODUCT HEIGHT  
ADJUSTMENTS INCLUDE:  
+/- .3/4" FOR BEYOND FRAMELESS, FRAMED, SOLID  
+/- .1/4" FOR BEYOND FRAMELESS LOW PROFILE  
+/- .1/4" FOR ASPECT

DIMENSION NOTE:

DIMENSIONS ARE TO CENTERLINE OF  
DEMOUNTABLE WALL AND TO FACE OF DRYWALL  
PARTITION UNLESS OTHERWISE NOTED.

HOLD-TO DIMENSION APPROVAL:

THE SCOPE OF PRODUCT SHOWN ON THESE DRAWINGS WILL BE MANUFACTURED TO THE HOLD-TO DIMENSIONS NOTED.

HENRICKSEN EXPRESSLY DISCLAIMS ANY AND ALL LIABILITY FOR ANY COST OR DELAYS CAUSED BY DEVIATION FROM THE HOLD-TO DIMENSIONS NOTED.

☐ APPROVED  
☐ APPROVED AS NOTED (NO RESUBMISSION REQUIRED)  
☐ REVISE AND RESUBMIT

BY:  
COMPANY:  
DATE:

REVISION HISTORY:

REV	REVISION DESCRIPTION	DATE
1	revised backgrounds	02-24-2026
2		
3		
4		
5		
6		
7		
8		
9		
10		

Henricksen Project Number 25101812  
Issue Date 11-06-2025  
Designer C. PAPE  
Project Manager TBD  
Scale N.T.S.

CUT SHEETS

301